

For String Bassists wishing to audition for the Lincoln High School Band Program:

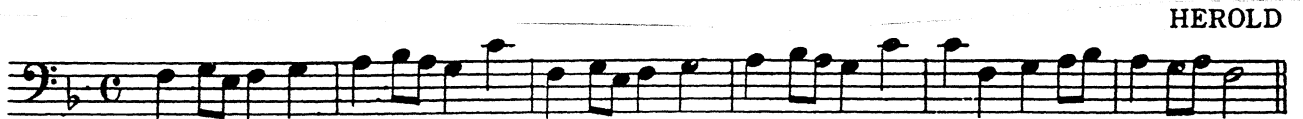
1. **DOWNLOAD** the appropriate audition packet for your instrument.
2. Learn as many **SCALES** on the scale sheet as you can:
 - a. Learn at least 1 scale to be eligible for CONCERT BAND.
 - b. Learn at least 4 scales to be eligible for SYMPHONIC BAND and/or JAZZ BAND II.
 - c. Learn all 12 to be eligible for WIND ENSEMBLE and/or JAZZ BAND I.
3. Learn at least one of the **EXCERPTS** for your instrument.
 - a. Learn Excerpt #1 only to be eligible for CONCERT BAND, SYMPHONIC BAND, and JAZZ II.
 - b. Learn Excerpt #2 (or both excerpts) to be eligible for WIND ENSEMBLE and JAZZ BAND I.
4. To be considered for either of the **JAZZ BANDS**:
 - a. Complete all of the above requirements AND also learn the Jazz Excerpt at the end of the packet.
5. **RECORD** – make a recording (video or audio) of all the materials you've prepared. Make sure your recording includes the following:
 - a. State your name and current school loudly and clearly at the beginning of the recording.
 - b. State the name of each scale before you play it.
 - c. State which excerpt you are performing before you play it.
 - d. Include the Jazz Excerpt if you are interested in either Jazz Band.
 - e. State your name and current school again at the end of your recording.
6. **POST** or **DELIVER** your recording:
 - a. Please either email your recording or post it on YouTube and email a link.
 - b. Send your recording or link to: cmckenzie@sjusd.org

Major Scales - Circle of Fourths

- Instructions: 1. Minimum Tempo: Quarter Note = 120
2. Perform all 12 scales (circle of fourths)
3. Slur Each Scale (except Trombone)
4. One (1) Octave Only

The image displays 12 major scales arranged in two columns, each on a single staff with a bass clef. The scales are: C, Bb, Ab, Gb, F, Eb, E, D, C, B, Ab, G. Each scale is written with a key signature and a slur over the notes. The first column contains scales C, Bb, Ab, Gb, F, Eb. The second column contains scales E, D, C, B, Ab, G.

EXCERPT 1



EXCERPT 2



DOXY

BASS

By **SONNY ROLLINS**
Arranged by **JOHN BERRY**

(SWING) (♩ = $\frac{3}{4}$)

1 F13 2 Bb9 3 F2/A 4 D7(b5) 5 G7(b9) 6 C+7 7 C13 8 F13

Bass line for measures 1-8. Measure 1 starts with a 1-measure rest. The notes are: 1. F2, 2. Bb1, 3. F2, 4. Bb1, 5. F2, 6. Bb1, 7. F2, 8. Bb1, 9. F2, 10. Bb1, 11. F2, 12. Bb1, 13. F2, 14. Bb1, 15. F2, 16. Bb1, 17. F2, 18. Bb1, 19. F2, 20. Bb1, 21. F2, 22. Bb1, 23. F2, 24. Bb1, 25. F2, 26. Bb1, 27. F2, 28. Bb1, 29. F2, 30. Bb1, 31. F2, 32. Bb1, 33. F2, 34. Bb1, 35. F2, 36. Bb1, 37. F2, 38. Bb1, 39. F2, 40. Bb1, 41. F2, 42. Bb1, 43. F2, 44. Bb1, 45. F2, 46. Bb1, 47. F2, 48. Bb1, 49. F2, 50. Bb1, 51. F2, 52. Bb1, 53. F2, 54. Bb1, 55. F2, 56. Bb1, 57. F2, 58. Bb1, 59. F2, 60. Bb1, 61. F2, 62. Bb1, 63. F2, 64. Bb1, 65. F2, 66. Bb1, 67. F2, 68. Bb1, 69. F2, 70. Bb1, 71. F2, 72. Bb1, 73. F2, 74. Bb1, 75. F2, 76. Bb1, 77. F2, 78. Bb1, 79. F2, 80. Bb1, 81. F2, 82. Bb1, 83. F2, 84. Bb1, 85. F2, 86. Bb1, 87. F2, 88. Bb1, 89. F2, 90. Bb1, 91. F2, 92. Bb1, 93. F2, 94. Bb1, 95. F2, 96. Bb1, 97. F2, 98. Bb1, 99. F2, 100. Bb1.

5 F9 6 Bb9 7 F2/A 8 D7(b5) 9 G7(b9) 10 C9 11 F13

Bass line for measures 5-12. Measure 5 starts with a 5-measure rest. The notes are: 5. F2, 6. Bb1, 7. F2, 8. Bb1, 9. F2, 10. Bb1, 11. F2, 12. Bb1, 13. F2, 14. Bb1, 15. F2, 16. Bb1, 17. F2, 18. Bb1, 19. F2, 20. Bb1, 21. F2, 22. Bb1, 23. F2, 24. Bb1, 25. F2, 26. Bb1, 27. F2, 28. Bb1, 29. F2, 30. Bb1, 31. F2, 32. Bb1, 33. F2, 34. Bb1, 35. F2, 36. Bb1, 37. F2, 38. Bb1, 39. F2, 40. Bb1, 41. F2, 42. Bb1, 43. F2, 44. Bb1, 45. F2, 46. Bb1, 47. F2, 48. Bb1, 49. F2, 50. Bb1, 51. F2, 52. Bb1, 53. F2, 54. Bb1, 55. F2, 56. Bb1, 57. F2, 58. Bb1, 59. F2, 60. Bb1, 61. F2, 62. Bb1, 63. F2, 64. Bb1, 65. F2, 66. Bb1, 67. F2, 68. Bb1, 69. F2, 70. Bb1, 71. F2, 72. Bb1, 73. F2, 74. Bb1, 75. F2, 76. Bb1, 77. F2, 78. Bb1, 79. F2, 80. Bb1, 81. F2, 82. Bb1, 83. F2, 84. Bb1, 85. F2, 86. Bb1, 87. F2, 88. Bb1, 89. F2, 90. Bb1, 91. F2, 92. Bb1, 93. F2, 94. Bb1, 95. F2, 96. Bb1, 97. F2, 98. Bb1, 99. F2, 100. Bb1.

9 F9 10 Bb9 11 F2/A 12 D7(b5) 13 G7(b9) 14 G9 15 C9

Bass line for measures 9-16. Measure 9 starts with a 9-measure rest. The notes are: 9. F2, 10. Bb1, 11. F2, 12. Bb1, 13. F2, 14. Bb1, 15. F2, 16. Bb1, 17. F2, 18. Bb1, 19. F2, 20. Bb1, 21. F2, 22. Bb1, 23. F2, 24. Bb1, 25. F2, 26. Bb1, 27. F2, 28. Bb1, 29. F2, 30. Bb1, 31. F2, 32. Bb1, 33. F2, 34. Bb1, 35. F2, 36. Bb1, 37. F2, 38. Bb1, 39. F2, 40. Bb1, 41. F2, 42. Bb1, 43. F2, 44. Bb1, 45. F2, 46. Bb1, 47. F2, 48. Bb1, 49. F2, 50. Bb1, 51. F2, 52. Bb1, 53. F2, 54. Bb1, 55. F2, 56. Bb1, 57. F2, 58. Bb1, 59. F2, 60. Bb1, 61. F2, 62. Bb1, 63. F2, 64. Bb1, 65. F2, 66. Bb1, 67. F2, 68. Bb1, 69. F2, 70. Bb1, 71. F2, 72. Bb1, 73. F2, 74. Bb1, 75. F2, 76. Bb1, 77. F2, 78. Bb1, 79. F2, 80. Bb1, 81. F2, 82. Bb1, 83. F2, 84. Bb1, 85. F2, 86. Bb1, 87. F2, 88. Bb1, 89. F2, 90. Bb1, 91. F2, 92. Bb1, 93. F2, 94. Bb1, 95. F2, 96. Bb1, 97. F2, 98. Bb1, 99. F2, 100. Bb1.

13 F9 14 Gb13 15 F7(#9) 16 Bb9 17 Bb7

Bass line for measures 13-16. Measure 13 starts with a 13-measure rest. The notes are: 13. F2, 14. Bb1, 15. F2, 16. Bb1, 17. F2, 18. Bb1, 19. F2, 20. Bb1, 21. F2, 22. Bb1, 23. F2, 24. Bb1, 25. F2, 26. Bb1, 27. F2, 28. Bb1, 29. F2, 30. Bb1, 31. F2, 32. Bb1, 33. F2, 34. Bb1, 35. F2, 36. Bb1, 37. F2, 38. Bb1, 39. F2, 40. Bb1, 41. F2, 42. Bb1, 43. F2, 44. Bb1, 45. F2, 46. Bb1, 47. F2, 48. Bb1, 49. F2, 50. Bb1, 51. F2, 52. Bb1, 53. F2, 54. Bb1, 55. F2, 56. Bb1, 57. F2, 58. Bb1, 59. F2, 60. Bb1, 61. F2, 62. Bb1, 63. F2, 64. Bb1, 65. F2, 66. Bb1, 67. F2, 68. Bb1, 69. F2, 70. Bb1, 71. F2, 72. Bb1, 73. F2, 74. Bb1, 75. F2, 76. Bb1, 77. F2, 78. Bb1, 79. F2, 80. Bb1, 81. F2, 82. Bb1, 83. F2, 84. Bb1, 85. F2, 86. Bb1, 87. F2, 88. Bb1, 89. F2, 90. Bb1, 91. F2, 92. Bb1, 93. F2, 94. Bb1, 95. F2, 96. Bb1, 97. F2, 98. Bb1, 99. F2, 100. Bb1.

17 F9 18 Eb9 19 Dmi7 20 Ab9 21 G9 22 C7(b9) 23 F9

Bass line for measures 17-20. Measure 17 starts with a 17-measure rest. The notes are: 17. F2, 18. Bb1, 19. F2, 20. Bb1, 21. F2, 22. Bb1, 23. F2, 24. Bb1, 25. F2, 26. Bb1, 27. F2, 28. Bb1, 29. F2, 30. Bb1, 31. F2, 32. Bb1, 33. F2, 34. Bb1, 35. F2, 36. Bb1, 37. F2, 38. Bb1, 39. F2, 40. Bb1, 41. F2, 42. Bb1, 43. F2, 44. Bb1, 45. F2, 46. Bb1, 47. F2, 48. Bb1, 49. F2, 50. Bb1, 51. F2, 52. Bb1, 53. F2, 54. Bb1, 55. F2, 56. Bb1, 57. F2, 58. Bb1, 59. F2, 60. Bb1, 61. F2, 62. Bb1, 63. F2, 64. Bb1, 65. F2, 66. Bb1, 67. F2, 68. Bb1, 69. F2, 70. Bb1, 71. F2, 72. Bb1, 73. F2, 74. Bb1, 75. F2, 76. Bb1, 77. F2, 78. Bb1, 79. F2, 80. Bb1, 81. F2, 82. Bb1, 83. F2, 84. Bb1, 85. F2, 86. Bb1, 87. F2, 88. Bb1, 89. F2, 90. Bb1, 91. F2, 92. Bb1, 93. F2, 94. Bb1, 95. F2, 96. Bb1, 97. F2, 98. Bb1, 99. F2, 100. Bb1.

21 F9 22 Bb9 23 F2/A 24 D7(b5) 25 G7(b9) 26 C9 27 F13

Bass line for measures 21-24. Measure 21 starts with a 21-measure rest. The notes are: 21. F2, 22. Bb1, 23. F2, 24. Bb1, 25. F2, 26. Bb1, 27. F2, 28. Bb1, 29. F2, 30. Bb1, 31. F2, 32. Bb1, 33. F2, 34. Bb1, 35. F2, 36. Bb1, 37. F2, 38. Bb1, 39. F2, 40. Bb1, 41. F2, 42. Bb1, 43. F2, 44. Bb1, 45. F2, 46. Bb1, 47. F2, 48. Bb1, 49. F2, 50. Bb1, 51. F2, 52. Bb1, 53. F2, 54. Bb1, 55. F2, 56. Bb1, 57. F2, 58. Bb1, 59. F2, 60. Bb1, 61. F2, 62. Bb1, 63. F2, 64. Bb1, 65. F2, 66. Bb1, 67. F2, 68. Bb1, 69. F2, 70. Bb1, 71. F2, 72. Bb1, 73. F2, 74. Bb1, 75. F2, 76. Bb1, 77. F2, 78. Bb1, 79. F2, 80. Bb1, 81. F2, 82. Bb1, 83. F2, 84. Bb1, 85. F2, 86. Bb1, 87. F2, 88. Bb1, 89. F2, 90. Bb1, 91. F2, 92. Bb1, 93. F2, 94. Bb1, 95. F2, 96. Bb1, 97. F2, 98. Bb1, 99. F2, 100. Bb1.

BASS

25 26 27 28

F9 Bb9 F2/A D7(b5) G7(b9) G9 C9

Detailed description: This block contains the first line of bass notation, measures 25 through 28. The key signature has one flat (Bb). Measure 25 starts with a bass clef and a key signature change to Bb. The notes are F2, Bb, and A. Measure 26 has notes G, Bb, and A. Measure 27 has notes G, Bb, and A. Measure 28 has notes G, Bb, and A.

29

30 31 32

F9 Gb13 F7(#9) Bb9 Bb7

Detailed description: This block contains the second line of bass notation, measures 29 through 32. Measure 29 has notes F, Bb, and A. Measure 30 has notes G, Bb, and A. Measure 31 has notes G, Bb, and A. Measure 32 has notes G, Bb, and A.

33 34 35 36

F9 E7(b9) Ebma7 D7(b5) G9 C9 F9 TO CODA

Detailed description: This block contains the third line of bass notation, measures 33 through 36. Measure 33 has notes F, Bb, and A. Measure 34 has notes G, Bb, and A. Measure 35 has notes G, Bb, and A. Measure 36 has notes G, Bb, and A.

37

38 39 40

F9 Bb9 F2/A D7(b5) G7(b9) C9 F13

Detailed description: This block contains the fourth line of bass notation, measures 37 through 40. Measure 37 has notes F, Bb, and A. Measure 38 has notes G, Bb, and A. Measure 39 has notes G, Bb, and A. Measure 40 has notes G, Bb, and A.

41 42 43 44

F9 Bb9 F2/A D7(b5) G7(b9) G9 C9

Detailed description: This block contains the fifth line of bass notation, measures 41 through 44. Measure 41 has notes F, Bb, and A. Measure 42 has notes G, Bb, and A. Measure 43 has notes G, Bb, and A. Measure 44 has notes G, Bb, and A.

45

46 47 48 49 50

F9 Gb13 F7(#9) Bb9 Bb7 F9 E7(b9) Ebma7 D9

Detailed description: This block contains the sixth line of bass notation, measures 45 through 50. Measure 45 has notes F, Bb, and A. Measure 46 has notes G, Bb, and A. Measure 47 has notes G, Bb, and A. Measure 48 has notes G, Bb, and A. Measure 49 has notes G, Bb, and A. Measure 50 has notes G, Bb, and A.

1. 2.

51 52 53 54

G9 C9 F9 D.S. AL CODA

Detailed description: This block contains the seventh line of bass notation, measures 51 through 54. Measure 51 has notes G, Bb, and A. Measure 52 has notes G, Bb, and A. Measure 53 has notes G, Bb, and A. Measure 54 has notes G, Bb, and A.

CODA

55 56 57 58

F13 Bb9 F2/A D7(b5) G7(b9) C+7 F13

Detailed description: This block contains the eighth line of bass notation, measures 55 through 58. Measure 55 has notes F, Bb, and A. Measure 56 has notes G, Bb, and A. Measure 57 has notes G, Bb, and A. Measure 58 has notes G, Bb, and A.